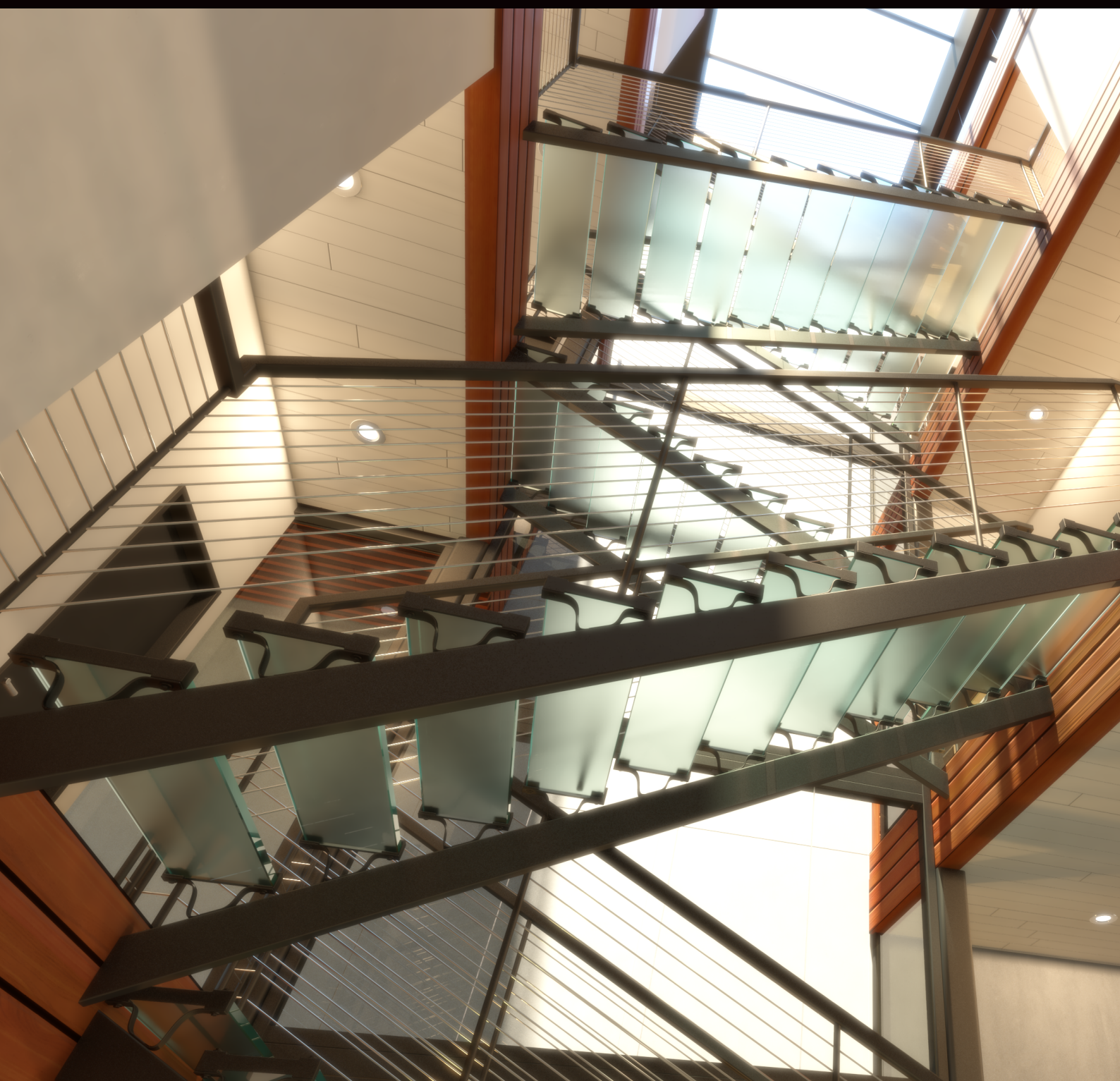




Revit

Professional Rendering for Architects & Designers

July 2017





Revit

Professional Rendering for Architects & Designers

July 2017

CONTENTS

p1 CORE VALUE PROPOSITION

THE SOLUTION

PRODUCT HIGHLIGHTS

TYPICAL CUSTOMER

p2 CORE BENEFITS AND SUPPORTING
EXAMPLES

p3 FEATURES AND BENEFITS

p4 LICENSING AND PRICING

DID YOU KNOW?

WEB RESOURCES

Help Index

Videos Showing New Features

V-Ray for Revit Tutorial

Amazing Support

News and Everything V-Ray

docs.chaosgroup.com

www.youtube.com/user/ChaosGroupTV/videos

<https://www.youtube.com/watch?v=DxNKfl67PU4>

support@chaosgroup.com

chaosgroup.com

CORE VALUE PROPOSITION

Architects must make thousands of design decisions throughout the life of a project, and the best way for them to evaluate the options is to generate realistic images from their 3D building model. With V-Ray for Revit, they can review design options quickly and easily and make informed choices faster.

THE SOLUTION

V-Ray lets architects render professional-quality, high-resolution images directly from their Revit model and helps them make critical design decisions.

PRODUCT HIGHLIGHTS

- Create photorealistic imagery fast with a familiar and easy to use interface
- Review and present designs fast with simple VR tools
- Special material overrides for diagrammatic renderings
- Advanced image post-processing
- Material library that includes over 500 materials and works across all V-Ray 3.x products

TYPICAL CUSTOMER

The typical V-Ray for Revit customer is an architect who is looking for a quick way to create hundreds of design renderings throughout the project. And because deadlines are frequent and tight, he or she needs a dependable rendering solution.

CORE BENEFITS AND SUPPORTING EXAMPLES

	QUALITY	SPEED	DESIGN
Core benefits	V-Ray lets you render professional, high resolution images with realistic lights, materials, and cameras.	V-Ray is fast. Render quickly and make design decisions faster.	V-Ray for Revit is made for designers. It's fast to set up, with no complicated settings and no training required.
Supporting examples	<ol style="list-style-type: none"> 1. Accurate lights & illumination 2. Physically-correct materials 3. Real-world cameras 	<ol style="list-style-type: none"> 1. Interactive rendering (GPU or CPU) 2. Fast rendering across multiple machines (Swarm) 	<ol style="list-style-type: none"> 1. Intuitive user interface 2. Simple render presets 3. Extensive V-Ray material library

	POWER	SMART INTEGRATION	THE INDUSTRY STANDARD
Core benefits	V-Ray for Revit handles your biggest building models.	V-Ray for Revit works right in Revit. No import or export needed.	92 of the top 100 architecture firms render with V-Ray.
Supporting examples	<ol style="list-style-type: none"> 1. Handles large, complex BIM models 2. Supports highly detailed entourage – grass, trees, cars, people (2D and 3D RPC) 3. Render complete interiors with furniture, fixtures, and equipment (FF&E) 	<ol style="list-style-type: none"> 1. No import or export required 2. Seamless connection with BIM database 3. Automatic translation of Revit materials 	<ol style="list-style-type: none"> 1. Compatible with industry standard applications – 3ds Max, Rhino, SketchUp 2. Consistent rendering results 3. Extensive user community and ecosystem 4. Shared libraries and assets

FEATURES AND BENEFITS

FEATURES	FEATURES – NON-TECHNICAL	DESCRIPTION
V-Ray rendering	Render presets	Quickly balance quality and speed with render presets. Work in draft mode for early versions and switch to high quality for presentations.
V-Ray RT	Interactive rendering	Render interactively while you design. Fine-tune lights and materials and see the results right away.
User interface	Designer-friendly interface	Get familiar with V-Ray for Revit's intuitive interface.
Resolution	High resolution output	Render high-quality, high resolution images for prints and presentations.
V-Ray materials	Physical materials	Automatically convert Revit materials to V-Ray's physically-correct materials.
Material overrides	Design model materials and extensive V-Ray material library	Easily make scenes look like a scale model with material presets like basswood and foam core, or override individual materials with high quality V-Ray materials
V-Ray Sun & Sky	Sun & sky	Select a time of day and simulate daylight from anywhere on the planet.
Image-based lighting	Environment lighting	Light scenes using a single HDR environment image.
IES lights	Interior lighting	Light interior spaces using accurate lighting data direct from the manufacturer.
Stereoscopic 6x1 camera	Virtual reality	Explore your designs in VR with Google Cardboard and Samsung Gear VR.
VR scene export	3ds Max export	Export a render-ready scene from Revit to V-Ray Standalone renderer.
V-Ray Frame Buffer	Frame buffer	Fine-tune your render's color, exposure, and more directly in V-Ray's frame buffer.

LICENSING AND PRICING

PRODUCT	DESCRIPTION	PRICE*
V-Ray for Revit – Workstation	Professional rendering plug-in for Autodesk Revit Includes: <ul style="list-style-type: none"> 1 floating user license 1 floating render license Free technical support 	\$695
V-Ray Render Node	Render-only license for network & distributed rendering	\$350 (volume discounts available)

***Volume pricing discounts available**

DID YOU KNOW?

- SWARM – the elastic distributed rendering engine for V-Ray for Revit, uses the same universal render node licenses that ship with V-Ray for 3DS Max. Adding render node licenses gives you more distributed rendering capabilities in both V-Ray for Revit and V-Ray for 3ds Max.
- VRmat editor – V-Ray for Revit ships with a VRmat material editor which is perfect for creating and modifying .vrmats for use in override materials. The VRmat editor allows you to create materials that work across the whole range of V-Ray products including V-Ray for 3DS Max, V-Ray for Rhino, and V-Ray for SketchUp.

CHAOSGROUP